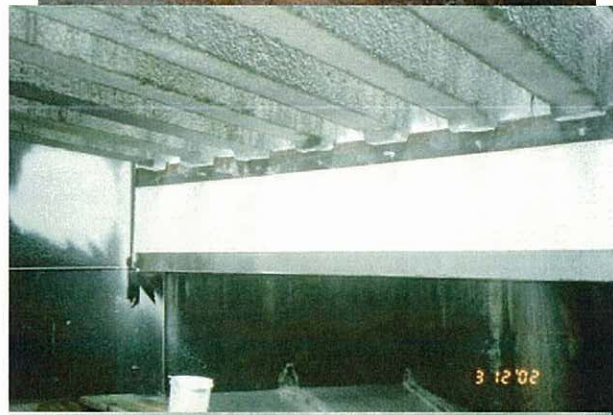


Polibrid 705 *Case History*

Tongariro Power Scheme Genesis Energy / Poutu Intake Structure



- **Client:** Genesis Power Limited
- **Facility:** Poutu Intake Structure, Tongariro River, Tongariro National Park.
- **Consultant:** Meritec
- **Client Engineer:**
Ian Meredith
- **Product:** POLIBRID 705
- **Contractor:** Polymer Developments Group
- **Project:** Provide a wear resistant lining to badly eroded intake chamber in bed of Tongariro River.
- **Substrate:** Severely eroded concrete
- **Specification:** Abrasive blast to clean profile. Prepare surface with EnduragROUT to datum. Apply up to 10mm Polibrid 705 as necessary to achieve specified finish.
- **Cure 24 hours.**



December 2002

Polymer Group Limited,
62 Stonedon Drive, East Tamaki,
Auckland, New Zealand.

Freephone: 0800 999 001 Fax: 64-9-274
1405 Email: sales@polymer.co.nz

www.polymer.co.nz