

Product Brochure

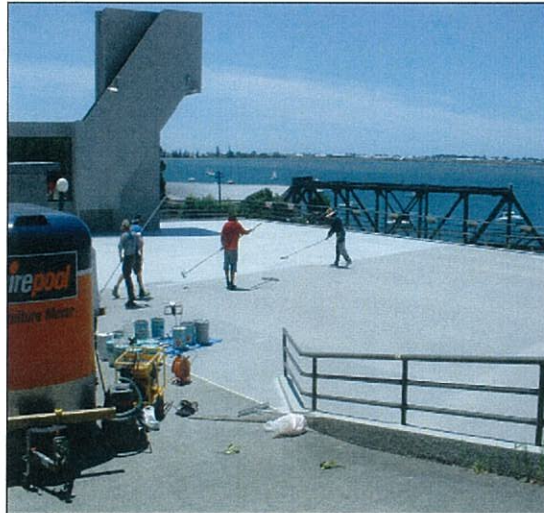
Waterproofing



POLYMER GROUP LTD

WATERPROOFING

WATERPROOFING THAT WORKS!



WATERPROOFING SOLUTIONS

Polymer Group Ltd has been providing waterproofing solutions for New Zealand's commercial and industrial sectors for over 20 years. The protection of property assets from the ingress of water is vital and relies on:

- Good design
- Good product selection
- Good installation
- Diligent maintenance

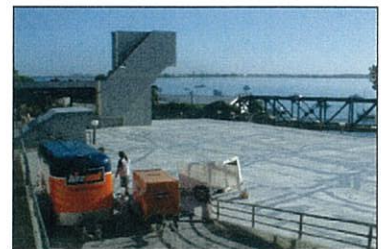
If any of these key characteristics are absent during the design, construction and life of a building irreparable damage may result. Polymer Group's experienced staff are able to review your project or maintenance requirements and offer:

- Sole responsibility solutions
- Specific project specifications
- Material samples
- Installation

- Quality assured performance
- Maintenance warranty

We will write you a specification, provide you with samples of a recommended material, provide a quality assured performance installation process and finally write you a maintenance warranty.

However, our services are provided on a regular basis to large property owners and consortiums and New Zealand's leading industrial companies, for example Macquarrie Goodman, ING Properties, Genesis Energy, Mighty River Power, Trust Power, Fonterra Dairy Group, New Zealand Refining Company, amongst many others.



LIQUID APPLIED SEAMLESS MEMBRANES

Polymer Group pioneered the use of high-performance, liquid applied, seamless membranes in the New Zealand waterproofing market in 1989. Such materials provide durable, robust monolithic protection for a variety of substrates including concrete and timber. These materials when applied to commercial and industrial structures, have the following attributes:

- **100% bonding to substrate**
- **Seamless monolithic membrane**
- **Durable resilient and UV stable**
- **Excellent non-skid performance**
- **Easily maintained**



Macquarrie Goodman—Carpark

TOUGH, DURABLE CHEMICALLY RESISTANT SEAMLESS MEMBRANES



Genesis Energy—Tongariro Power Scheme

Many liquid applied membranes are based on the chemistry of polyurethanes and their derivatives. The choice of an appropriate material for a specific application comes down to accurately assessing and specifying the environment in which the waterproofing membrane must provide functional and durable performance. If chemical resistance is a priority then a rapid curing polyurea or polyespartic may be the preferred choice. If resilience and wear-resistance is of primary importance, then a polyurethane or modified polyurethane provides the maintenance and consulting engineer with a high performance solution.

SOLE RESPONSIBILITY CONTRACTS

Polymer Group Ltd pioneered the introduction of sole responsibility supply and install application contracts in the mid 1980's. The advantages for the client of a total responsibility contract are numerous:

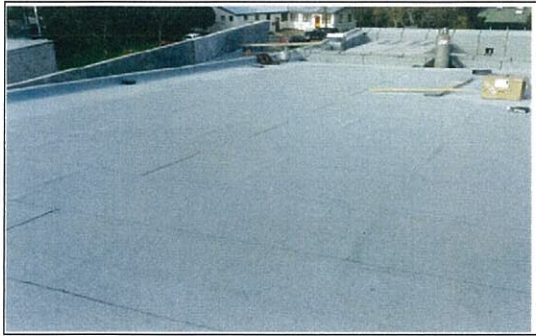
1. Simplicity of Administration
2. A single entity providing complete project management
3. Integrated warranties which cover not only material but also preparation, application
4. Ongoing maintenance surveillance and management (if required).

Polymer Group Ltd has its own highly experienced, technically qualified staff providing the same level of quality assurance on-site as the company operates under for its manufacturing facility which is a Telarc Registered entity (ISO 9001:2000). On-site labour and application services are provided by trained Polymer Group applicators under the supervision of Polymer Group's Contract Manager, Ron Avery. Working in conjunction with the client the company is able to provide full project organization including equipment and sundry services.



Fonterra Dairy Group – Waitoa

HIGH PERFORMANCE SHEET MEMBRANES



Torch-On membranes are for use on roofs, gutters and parapets where an impervious waterproof membrane is required to prevent damage to building elements and adjoining areas. These products can be applied to new or existing buildings and structures.

The torch on membrane is designed for use on roofs and gutters as the first layer of a double layer system and all areas requiring detailing such as upstands, protrusions, rainwater heads and outlets.

These membranes have a serviceable life of at least 15 years, provided they are installed and maintained correctly.

Torch on membrane technology has improved dramatically in recent years and provides a viable functional alternative to liquid membranes. Whether for reasons of access, the nature of the substrate or compatibility issues with an existing material, Polymer Group can provide a solution for all your demanding waterproofing requirements.

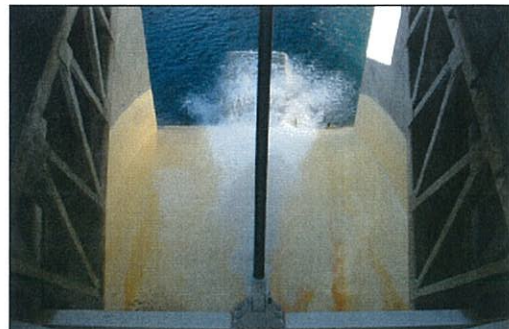


SURFACE PREPARATION AND QUALITY ASSURANCE

As with any coating or substrate repair process, the end result and the durability of the finished product will be entirely dependent on thorough surface preparation and attention to application detail. The Polymer team of qualified experienced application chemists and engineers set and maintain rigorous standards of quality assurance at all stages of any project with which they become involved. Where necessary this may extend to the creation of a completely controlled environment, particularly for the installation of rapid cure plural component coatings and linings. All quality control procedures are robust and traceable ensuring we deliver the job that our client has contracted for. Liaison with the client and the client's engineering representatives is maintained throughout the contract process.



Nelson—Car Park



Project organization, product application, quality assurance and follow up are all conducted in accordance with the company's ISO 9001:2000 accreditation procedures.



Genesis Energy—Tongariro Power Scheme



POLYMER GROUP LTD
62 Stonedon Drive East Tamaki Auckland 2141
PO Box 204 106 Highbrook Manukau 2161
Freephone: 0800 999 001 Fax: 09 274 1405 E-mail: sales@polymer.co.nz www.polymer.co.nz
Contacts: Lorne Crowley Technical Director crowley@polymer.co.nz Ron Avery General Manager Contracting avery@polymer.co.nz
Chemically Engineered Solutions for Extreme Environments

Polymer Group Ltd is an applied technology company comprising a team of industrial chemists, engineers and qualified coatings inspectors which has served New Zealand industry for over 25 years.

Property Asset Protection is the company's major focus, providing proven, durable solutions for the **protection of structural steel, concrete and timber** structures.

Wear resistant, Anti-corrosive Protection Systems are engineered to provide optimum performance and extended maintenance intervals.

Surface Coating Technology Advances offer multiple choices to the asset manager and civil engineer who is seeking long term solutions and minimum downtime, but not always able to provide an optimum application time frame.

Maintenance Assessments and Specification Options give the client the opportunity to inspect and discuss the asset with experienced personnel, taking into consideration the exposure environment, past performance of any existing protection systems, available downtime and other constraining influences.

Sole Responsibility Material Supply and Application Contracts provide the client with further reassurance that their protection/maintenance systems are supplied and installed by a **Quality Assured, ISO 9001:2008** company.

We are on the Web

www.polymer.co.nz

Solutions for your Extreme Environment



Car Parking Deck



Under Tile Terrace



Dairy Powder Tower Roof



Dairy Powder Tower Roof



- Jotun® Marine & Protective Coatings
- Polibrid® Durable Linings
- Tremco® Waterproofing Systems
- Rhino Linings® Durable Coatings
- Nullifire® Fireproofing